






MODEL OVERVIEW

2011 FORESTER



MODEL	SELECT NEW OR REVISED FEATURES (see specifications for complete list)
<p>All models</p>	<ul style="list-style-type: none"> • All new 2.5L DOHC Subaru Boxer Engine (naturally-aspirated models) • High/low heated seats replace 4-level heated seats • Revised front grille • New colours: Marine Blue Pearl, Spark Silver Metallic, Paprika Red Pearl (full availability) • Deleted colours: Newport Blue Pearl, Steel Silver Metallic • New cloth upholstery
<p>Forester 2.5X</p> 	<p>No changes</p>
<p>Forester 2.5X Convenience Package</p> 	<ul style="list-style-type: none"> • 10-way power driver's seat • Voice-activated blueconnect® Bluetooth® hands-free system • 16-inch aluminum alloy wheels • PZEV becomes an option
<p>Forester 2.5X Touring Package</p> 	<ul style="list-style-type: none"> • New 17-inch aluminum alloy wheels • Advanced AM/FM/CD/MP3/WMA audio system • Voice-activated Bluetooth® hands-free system • MediaHub for iPod®/USB audio integration with Bluetooth® streaming audio • Auto up/down driver's side power window
<p>Forester 2.5X Limited Package</p> 	<ul style="list-style-type: none"> • Pioneer® AVIC in-dash navigation/audio system with detachable touchscreen, AM/FM/CD/MP3/WMA, iPod®/USB audio integration with text display, auxiliary audio input and Bluetooth® hands-free system with steering wheel-mounted controls • Pioneer® A-series speakers (front and rear) • New 17-inch aluminum alloy wheels • Auto up/down driver's side power window • Deleted woodgrain interior trim • Non-perforated leather seating surfaces (replaces perforated leather)
<p>Forester 2.5XT Limited</p> 	<ul style="list-style-type: none"> • Pioneer® AVIC in-dash navigation/audio system with detachable touchscreen, AM/FM/CD/MP3/WMA, iPod®/USB audio integration with text display, auxiliary audio input and Bluetooth® hands-free system with steering wheel-mounted controls • Pioneer® speakers (front and rear) • Auto up/down driver's side power window • Revised rear spoiler • Non-perforated leather seating surfaces (replaces perforated leather)

Product details based on the latest information available at the time of publication and are subject to change without notice or incurring obligation. © 2010 Subaru Canada, Inc.

MODEL OVERVIEW
2011 FORESTER



Forester 2.5X shown

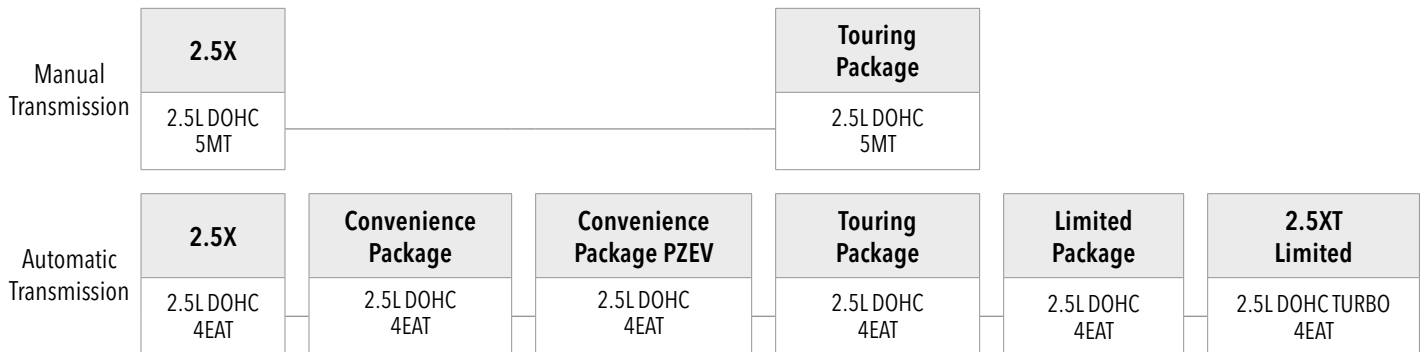
- ❶ Large standard roof rails increase overall versatility and give the Forester an upright, SUV-like profile.
- ❷ 2.5XT Limited models feature a new rear spoiler which improves aerodynamics for improved fuel efficiency.
- ❸ Thanks to the extensive use of high-tensile steel, the Forester is an IIHS Top Safety Pick and also features relatively thin roof pillars for excellent visibility, reducing the chances of an accident in the first place.
- ❹ Forester 2.5X Touring Package and Limited Package models feature new 17-inch aluminum alloy wheels that give the Forester a dynamic appearance.
- ❺ Auto-leveling HID headlights on 2.5X Limited Package and 2.5XT Limited models provide added safety on dark roads.
- ❻ A subtle redesign of the front grille keeps the Forester looking fresh as it heads into its third model year.



- ❶ 2.5X Limited Package and 2.5XT Limited models are equipped with the Pioneer® AVIC-U310BT media system and Pioneer® speakers, front and rear, for excellent clarity and sound reproduction.
- ❷ A flip-forward seat cushion table with integrated and illuminated cup holders is standard on Touring and Limited Packages.
- ❸ The Forester boasts more cargo volume and a larger cargo floor than most competitors.
- ❹ Reclining rear seats are standard on Touring and Limited Packages as well as 2.5XT Limited.
- ❺ A 10-way power driver's seat enhances driver comfort and is standard on all but the introductory 2.5X model.
- ❻ An auto up/down driver's side power window on Forester 2.5X Touring Package provides added driver convenience.
- ❼ Bluetooth® hands-free technology is standard on most models, allowing drivers to keep their hands on the wheel and eyes on the road.

Product details based on the latest information available at the time of publication and are subject to change without notice or incurring obligation. © 2010 Subaru Canada, Inc.

MODEL LINEUP 2011 FORESTER



Forester 2.5X

Horizontally opposed, 4-cylinder, 2.5L SUBARU BOXER engine with Active Valve Control System
 170 horsepower and 174 lb-ft of torque
 5-speed Manual Transmission (5MT) with Hill Holder system or optional 4-speed Electronic Direct Control Automatic Transmission with Manual Mode (4EAT)
 Standard open-type rear differential
 Vehicle Dynamics Control system and Traction Control System
 Anti-lock Braking System, Electronic Brake-force Distribution (EBD) and Brake Assist
 Front brakes: Ventilated discs (296 x 24 mm), dual-piston calipers
 Rear brakes: Solid discs (286 x 10 mm), single-piston calipers
 Driver and front passenger front and side-impact airbags; side curtain airbags with rollover sensor
 Height-adjustable, active front head restraints

Engine immobilizer system and anti-theft security system
 16-inch steel wheels with wheel covers and Bridgestone® Dueler All-Season tires
 Power-adjustable, foldable, heated, body-colour door mirrors
 Raised-profile roof rails; privacy tinted glass on rear doors and cargo area
 AM/FM/CD/MP3/WMA audio system with 4 speakers, auxiliary audio input, Radio Data System, vehicle-speed-sensitive volume and text display
 Air conditioning with air filtration
 Tilt-adjustable, telescopic steering wheel with integrated audio and cruise control
 Heated front seats; 60/40-split, flat-folding rear seats
 Soft-grip controls
 Premium cloth upholstery
 Splash guards

Convenience Package: Available on 2.5X (4EAT only)

16-inch aluminum alloy wheels
 10-way power-adjustable driver's seat including lumbar support
 Voice-activated blueconnect® Bluetooth® hands-free system

PZEV OPTION:

Available on Forester 2.5X Convenience Package
 PZEV emissions equipment
 PZEV rear badge
 PZEV embroidered floor mats

Product details based on the latest information available at the time of publication and are subject to change without notice or incurring obligation. © 2010 Subaru Canada, Inc.

MODEL LINEUP 2011 FORESTER

Touring Package: Available on Forester 2.5X

17-inch aluminum alloy wheels
 Power-sliding large glass sunroof
 Multi-reflector halogen fog lights
 Chrome door handles
 Stainless steel exhaust tips
 Wiper de-icer
 Reclining rear seats and rear-seat cushion table (retractable) with integrated illuminated cup holders
 Cargo area tray
 Leather-wrapped gear selector and steering wheel
 10-way power-adjustable driver's seat including lumbar support
 Advanced AM/FM/CD/MP3/WMA audio system with 4 speakers and steering wheel-integrated audio controls
 MediaHub for iPod®/USB audio integration with Bluetooth® streaming audio
 Voice-activated Bluetooth® hands-free system with steering wheel-mounted controls
 SIRIUS® Satellite Radio installed (3-month trial subscription included)
 Power windows (driver's auto up/down)

Limited Package: Available on Forester 2.5X (4EAT only)

17-inch aluminum alloy wheels
 Power-sliding large glass sunroof
 Multi-reflector halogen fog lights
 Wiper de-icer
 Xenon High Intensity Discharge (HID) headlights (low beam)
 Chrome door handles; stainless steel rear step pad and exhaust tips
 Air conditioning with automatic climate control and air filtration
 Leather-wrapped gear selector and steering wheel
 10-way power-adjustable driver's seat including lumbar support; driver's seatback storage pocket
 Reclining rear seats and rear-seat cushion table (retractable) with integrated illuminated cup holders

Retractable cargo cover and cargo area tray
 Leather seating surfaces
 Pioneer® AVIC in-dash navigation/audio system (AM/FM/CD/MP3/WMA) with detachable touchscreen and SD card with 12 million points of interest, iPod®/USB audio integration
 Pioneer® A-Series speakers
 Bluetooth® hands-free system with steering wheel-mounted controls
 SIRIUS® Satellite Radio installed (3-month trial subscription included)
 Power windows (driver's auto up/down)

Forester 2.5XT Limited

Turbocharged and intercooled, horizontally opposed, 4-cylinder, 2.5L SUBARU BOXER engine with Active Valve Control System
 224 horsepower and 226 lb-ft of torque
 4-speed Electronic Direct Control Automatic Transmission with Manual Mode (4EAT)
 Standard open-type rear differential
 Vehicle Dynamics Control system and Traction Control System
 Anti-lock Braking System, Electronic Brake-force Distribution (EBD) and Brake Assist
 Front brakes: Ventilated discs (296 x 24 mm), dual-piston calipers
 Rear brakes: Solid discs (286 x 10 mm), single-piston calipers
 Driver and front passenger front and side-impact airbags; side curtain airbags with rollover sensor
 Height-adjustable, active front head restraints
 Engine immobilizer system and anti-theft security system
 17-inch aluminum alloy wheels with Yokohama Geolandar All-Season tires
 Power-adjustable, foldable, heated, body-colour door mirrors
 Power-sliding large glass sunroof
 Multi-reflector halogen fog lights
 Xenon High Intensity Discharge (HID) headlights (low beam)
 Raised-profile roof rails; roofline spoiler
 Privacy tinted glass on rear doors and cargo area

Chrome door handles
 Stainless steel rear bumper step pad and exhaust tips
 Pioneer® AVIC in-dash navigation/audio system (AM/FM/CD/MP3/WMA) with detachable touchscreen and SD card with 12 million points of interest, iPod®/USB audio integration
 Pioneer® A-Series speakers
 Bluetooth® hands-free system with steering wheel-mounted controls
 SIRIUS® Satellite Radio installed (3-month trial subscription included)
 Air conditioning with automatic climate control and air filtration
 Leather-wrapped gear selector and steering wheel
 Til-adjustable, telescopic steering wheel with integrated audio and cruise control
 Aluminum alloy sport pedals
 60/40-split, flat-folding rear seats
 Heated front seats; 10-way power-adjustable driver's seat including lumbar support
 Reclining rear seats and rear-seat cushion table (retractable) with integrated illuminated cup holders
 Power windows (driver's auto up/down)
 Retractable cargo cover and cargo area tray
 Leather seating surfaces
 Splash guards
 Wiper de-icer

Product details based on the latest information available at the time of publication and are subject to change without notice or incurring obligation. © 2010 Subaru Canada, Inc.

VEHICLE SPECIFICATIONS

2011 FORESTER



2.5X

2.5XT Limited

Measurements

FUEL ECONOMY

Manual transmission (City/Hwy) (L/100 km)	9.9 / 7.4	-
Automatic transmission (City/Hwy) (L/100 km)	9.9 / 7.5	11.9 / 8.2
Recommended minimum octane (AKI) (*required octane)	87	91*
Fuel tank capacity (L)	64	64

GENERAL WEIGHTS

Curb weight: Manual transmission (kg)	1480	-
Curb weight: Automatic transmission (kg)	1500	1570
Gross Vehicle Weight Rating (GVWR) (kg)	2035	2055

TOWING CAPACITY [†]Please review Owner's Manual for details.

Maximum weight (kg) with trailer brakes [†]	1087	1087
Maximum weight (kg) without trailer brakes [†]	454	454
Maximum tongue weight (kg)	91	91

EXTERIOR

Length (mm)	4560	4560
Width (mm) without mirrors	1780	1780
Width (mm) with mirrors	2006	2006
Height (mm) with roof rails	1700	1700
Wheelbase (mm)	2615	2615
Track: Front (mm)	1530	1530
Track: Rear (mm)	1530	1530
Minimum ground clearance (at curb weight) (mm)	220	225
Steering: Turning circle (curb-to-curb) (m)	10.5	10.5
Drag coefficient (cd)	0.36	0.37

INTERIOR

Headroom: Front (mm)	1057	1015
Headroom: Rear (mm)	1026	958
Legroom: Front (mm)	1095	1095
Legroom: Rear (mm) (minimum)	965	965
Shoulder room: Front (mm)	1425	1425
Shoulder room: Rear (mm)	1411	1411
Hip room: Front (mm)	1344	1344
Hip room: Rear (mm)	1338	1338
Volume: EPA passenger (L)	3047	2891

Product details based on the latest information available at the time of publication and are subject to change without notice or incurring obligation. © 2010 Subaru Canada, Inc.

● Standard
- Not Available

CP Standard with Convenience Package
TP Standard with Touring Package
LP Standard with Limited Package

○ Optional
1 Also available as an accessory

VEHICLE SPECIFICATIONS

2011 FORESTER



	2.5X	2.5XT Limited
CARGO AREA		
Cargo volume (seats up) (L)	949	872
Cargo volume (seats folded flat) (L)	1934	1784
Floor length (seats folded flat) (mm)	1570	1570
Floor length (seats up) (mm)	960	960
Height (mm)	860	792
Rear gate opening height (mm)	825	825
Cargo floor to ground height (mm)	695	695
Width between wheel wells (mm)	1073	1073
GEAR RATIOS		
Manual Transmission (5MT):		
First Gear	3.454	-
Second Gear	2.062	-
Third Gear	1.448	-
Fourth Gear	1.088	-
Fifth Gear	0.780	-
Reverse Gear	3.333	-
Final Drive Ratio	4.111	-
Automatic Transmission with Manual Mode (4EAT):		
First Gear	2.785	2.785
Second Gear	1.545	1.545
Third Gear	1.000	1.000
Fourth Gear	0.694	0.694
Reverse Gear	2.272	2.272
Final Drive Ratio	4.444	4.111

Product details based on the latest information available at the time of publication and are subject to change without notice or incurring obligation. © 2010 Subaru Canada, Inc.



EXTERIOR COLOURS



Camellia Red Pearl



Dark Grey Metallic



Marine Blue Pearl



Obsidian Black Pearl



Paprika Red Pearl



Sage Green Metallic



Satin White Pearl

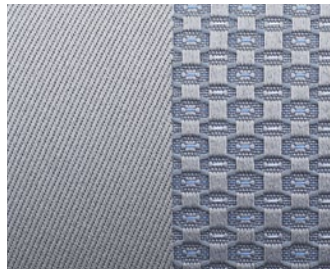


Spark Silver Metallic

UPHOLSTERY



Onyx Black Cloth



Platinum Grey Cloth



Onyx Black Leather



Platinum Grey Leather

WHEELS



16-inch Steel
(2.5X)



16-inch Aluminum Alloy
(Convenience Package)



17-inch Aluminum Alloy
(Touring Package, Limited Package)



17-inch Aluminum Alloy
(2.5XT Limited)

Product details based on the latest information available at the time of publication and are subject to change without notice or incurring obligation. © 2010 Subaru Canada, Inc.

VEHICLE PRICING

MODEL	ENGINE	TRANSMISSION	MSRP
2.5X	2.5L DOHC	5MT	\$25,995
	2.5L DOHC	4EAT	\$27,095
2.5X Convenience Package	2.5L DOHC	4EAT	\$28,095
2.5X Convenience Package with PZEV Option	2.5L DOHC	4EAT	\$28,795
2.5X Touring Package	2.5L DOHC	5MT	\$28,695
	2.5L DOHC	4EAT	\$29,795
2.5X Limited Package	2.5L DOHC	4EAT	\$32,995
2.5XT Limited	2.5L DOHC TURBO	4EAT	\$35,495

ALL PRICES ALONG WITH SPECIFICATIONS ARE SUBJECT TO CHANGE WITHOUT NOTICE. THE DEALER MAY SELL BELOW SUGGESTED RETAIL WITHOUT FEAR OF RECRIMINATION FROM SUBARU CANADA, INC. MSRP SHOWN EXCLUDES EXCISE TAX FOR AIR CONDITIONING, INLAND FREIGHT AND PRE-DELIVERY CHARGES. MSRP DOES NOT INCLUDE APPLICABLE TAXES.

COLOUR AVAILABILITY

EXTERIOR COLOUR	COLOUR CODE	2.5X					2.5XT Limited
		Convenience Package		Touring Package	Limited Package		
			PZEV Option				
Camellia Red Pearl	9Z	☐	☐	☐	☐	☐	☐
Dark Grey Metallic	1K	▲	▲	▲	▲	▲	▲
Marine Blue Pearl	9H	☐	☐	☐	☐	☐	☐
Obsidian Black Pearl	2J	▲	▲	▲	▲	▲	▲
Paprika Red Pearl	2T	▲	▲	▲	▲	▲	▲
Sage Green Metallic	1F	☐	☐	☐	☐	☐	-
Satin White Pearl	7J	▲	▲	▲	▲	▲	▲
Spark Silver Metallic	3S	▲	▲	▲	▲	▲	▲
INTERIOR TRIM		Cloth	Cloth	Cloth	Cloth	Leather	Leather

▲ : Onyx Black interior ☐ : Platinum Grey interior

Product details based on the latest information available at the time of publication and are subject to change without notice or incurring obligation. © 2010 Subaru Canada, Inc.